

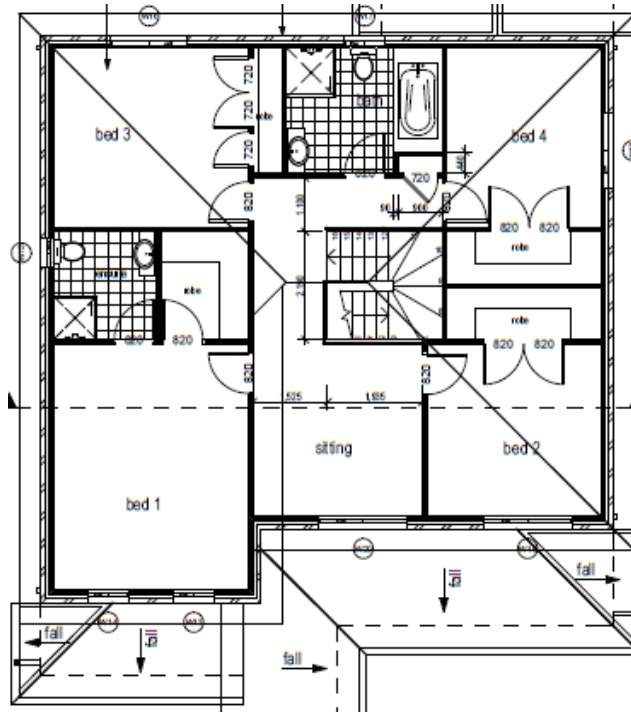
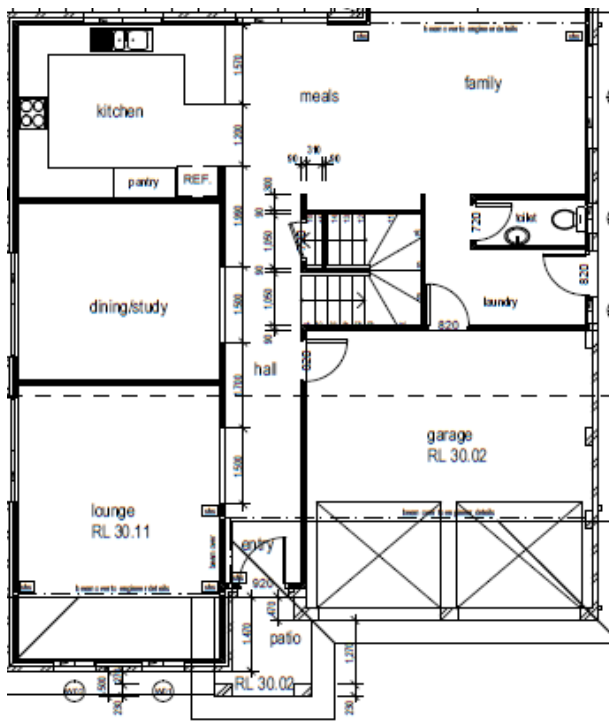
# Jessica 29.5

*Move-in package includes:  
Stencil driveway & path to patio  
Floor tiles to living areas & patio  
Carpets to staircase, bedrooms & robes  
Vertical blinds throughout  
Fly-screens throughout  
3 security doors*

## Home & Land Package Fr: \$592,960.00

**Details:**  
Home size: 29.5sq  
Frontage req: 14.1m  
Land: 451m<sup>2</sup>  
*Also available in 30 & 33sqs*

**Inclusions:**  
*Site Costs & Connections  
Standard BASIX Package  
Council & Statutory Requirements  
3500Lt above ground slimline  
rainwater tank  
3.5 star Gas hot water system  
Gas Package (Gas cooktop, bayonet Pt)  
R 1.5 External wall insulation  
R 2.5 Ceiling insulation*



DISPLAY CENTRE  
608 Hoxton Park Rd  
Hoxton Park NSW 2171  
ABN 50 053 268 894

Land Sales by  
**LandPro**  
CORPORATION PTY LTD  
Contact  
Ian Cox - 0416 277 613

SALES OFFICE  
ph (02) 9608 3333  
fax (02) 9608 6600

PO Box 110  
Hoxton Park NSW 2171  
sales@csbhomes.com.au  
www.csbhomes.com.au

LICENCE NO. 60343C

*"Quality Designed &  
Constructed Homes"*