



HOUSE & LAND PACKAGE

ASPRA 24

Primo Facade

LOT 47, Middleton Grange



**For illustration purpose only*

HOUSE	\$191,874 PRICE BASED ON PRIMO FACADE
FACADE (PRIMO)	\$2,650
COMPLETE PACKAGE	\$23,000
BASIX	\$7,000
LAND 480.3 sqm	\$328,000
TOTAL	\$552,524

THE ABOVE PRICE INCLUDES

- Standard Site Costs / Council & Workcover Conditions / BASIX
- Complete Package - Tiles, Carpet & Driveway to boundary
- House Price based on Designer Inclusions
- See quotation for full details



Contact
Ian Cox - 0416 277 613

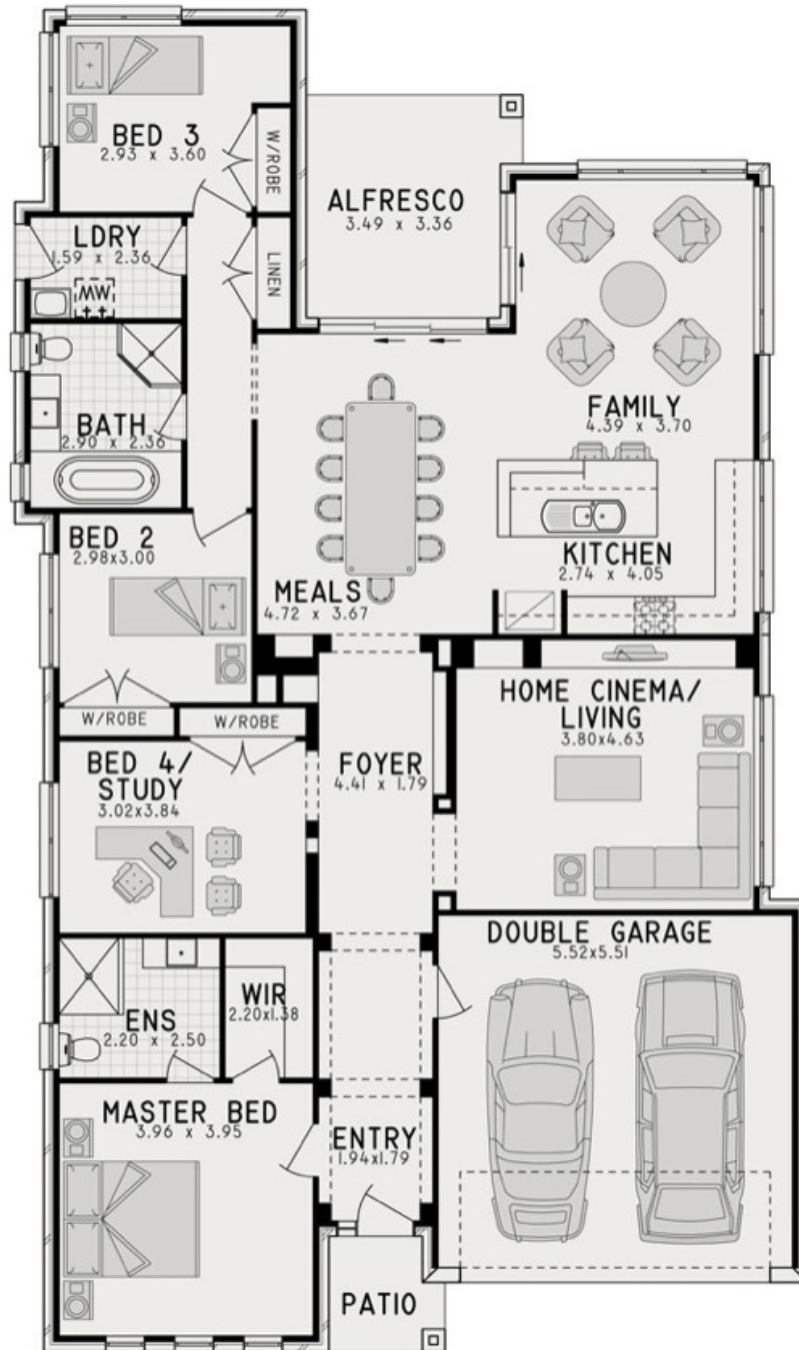


total area - 223.37 sqm

overall width - 11.72 m

length - 21 m

alfresco - Roof included 10.88 sqm



sales consultant	Helena O'Brien
phone	0433 013 959
email	Helena.oBrien@fowlerhomes.com.au