



HOUSE & LAND PACKAGE

MADISON 20

Primo Facade

LOT 49-53, Middleton Grange



**For illustration purpose only*

HOUSE	\$173,474 PRICE BASED ON PRIMO FACADE
FACADE (PRIMO)	\$2,650
COMPLETE PACKAGE	\$23,000
BASIX	\$7,000
LAND 451.4 sqm	\$325,000
TOTAL	\$531,124

THE ABOVE PRICE INCLUDES

- Standard Site Costs / Council & Workcover Conditions / BASIX
- Complete Package - Tiles, Carpet & Driveway to boundary
- House Price based on Designer Inclusions
- See quotation for full details



Land Sales by

LandPro
CORPORATION PTY LTD

Contact

Ian Cox - 0416 277 613



fowlerhomes
you deserve the best

1800 606 675

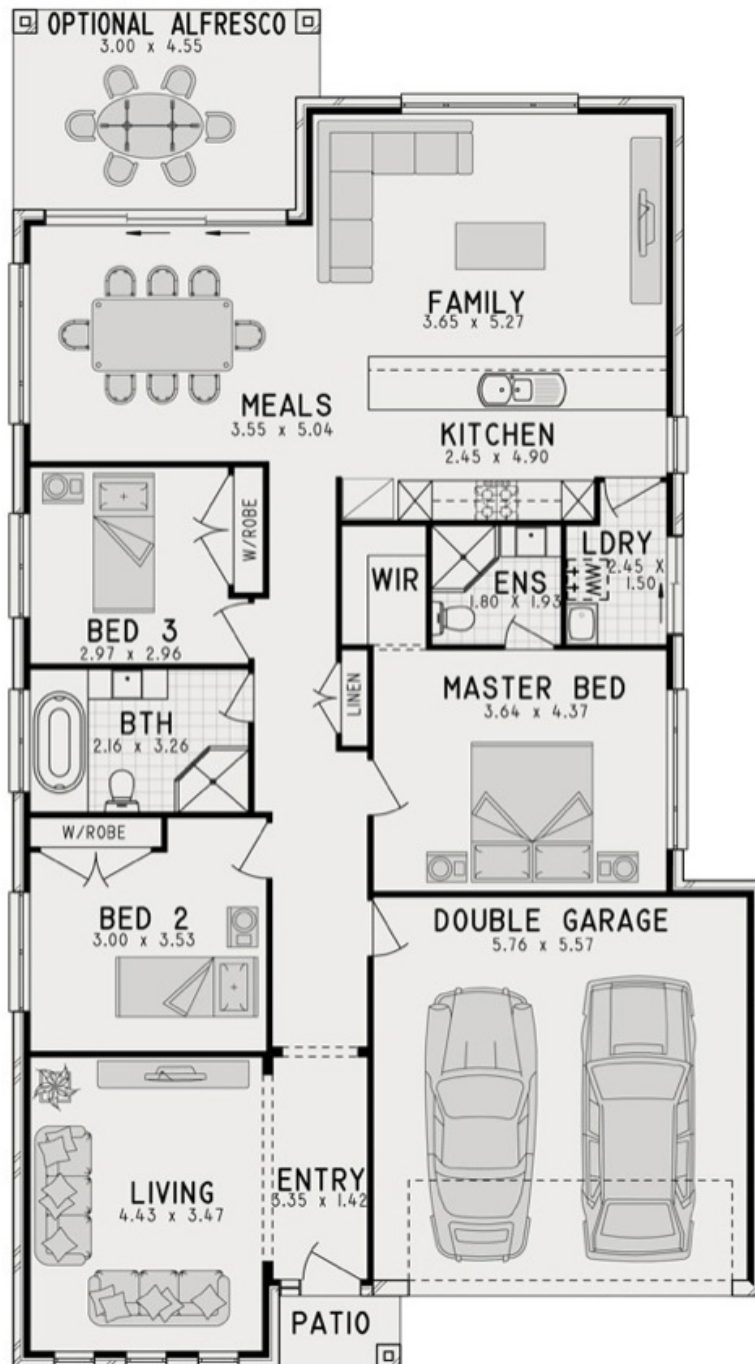
www.fowlerhomes.com.au

total area - 185.61 sqm

overall width - 11.15 m

length - 20.39 m

alfresco - 13.06 sqm



sales consultant	Helena O'Brien
phone	0433 013 959
email	Helena.oBrien@fowlerhomes.com.au

Note - The above mentioned price is inclusive of GST. This is not an offer or quotation, a full quotation must be provided. Standard site costs are based on land fall up to 1 metre and piers up to 50 lineal metres. All drawings and images are for illustrative purposes and should be used as a guide only. Lot size required varies, dependant on developer & council requirements. Fowler Homes Pty Ltd reserves the right to revise plans, Specifications and prices without notice or obligation. A separate land contract will be entered into with the land developer and a building contract with progress payments will be entered into with Fowler Homes Pty Ltd. Builders License Number: 113647C. Prices are effective as at 8th April 2010.