



# HOUSE & LAND PACKAGE

**PAREECE 23**

**Primo Facade**

**LOT 37 & 38, Middleton Grange**



*\*For illustration purpose only*

<b>HOUSE</b>	<b>\$187,874</b> PRICE BASED ON PRIMO FACADE
<b>FACADE (PRIMO)</b>	<b>\$2,650</b>
<b>COMPLETE PACKAGE</b>	<b>\$23,000</b>
<b>BASIX</b>	<b>\$7,000</b>
<b>LAND 496 sqm</b>	<b>\$330,000</b>
<b>TOTAL</b>	<b>\$550,524</b>

## THE ABOVE PRICE INCLUDES

- Standard Site Costs / Council & Workcover Conditions / BASIX
- Complete Package - Tiles, Carpet & Driveway to boundary
- House Price based on Designer Inclusions
- See quotation for full details



Land Sales by

**LandPro**

CORPORATION PTY LTD

Contact

Ian Cox - 0416 277 613



**fowlerhomes**  
you deserve the best

**1800 606 675**

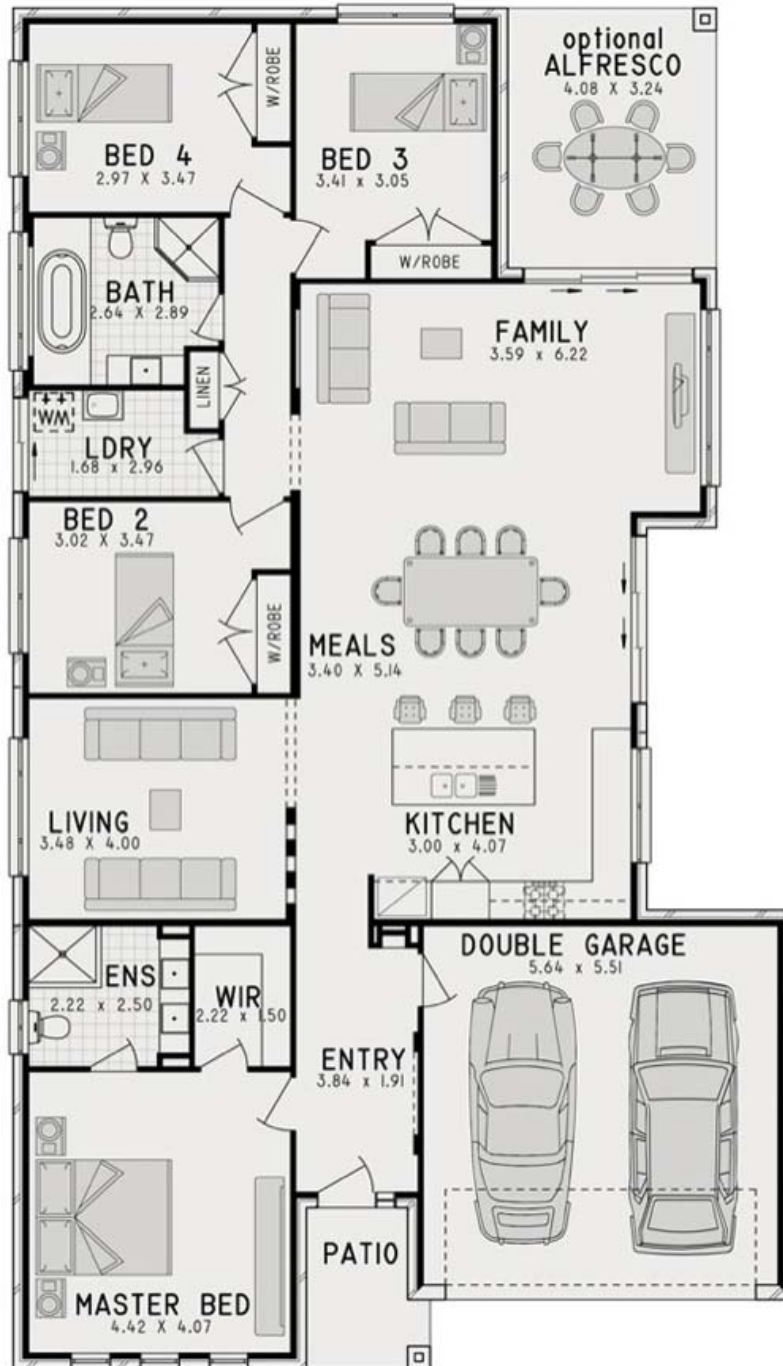
[www.fowlerhomes.com.au](http://www.fowlerhomes.com.au)

total area - 215.74 sqm

overall width - 12.11 m

length - 21.35 m

alfresco - 13.21 sqm



  
**fowlerhomes**  
you deserve the best  
**1800 606 675**  
[www.fowlerhomes.com.au](http://www.fowlerhomes.com.au)

sales consultant	Helena O'Brien
phone	0433 013 959
email	Helena.oBrien@fowlerhomes.com.au

Note - The above mentioned price is inclusive of GST. This is not an offer or quotation, a full quotation must be provided. Standard site costs are based on land fall up to 1 metre and piers up to 50 lineal metres. All drawings and images are for illustrative purposes and should be used as a guide only. Lot size required varies, dependant on developer & council requirements. Fowler Homes Pty Ltd reserves the right to revise plans, Specifications and prices without notice or obligation. A separate land contract will be entered into with the land developer and a building contract with progress payments will be entered into with Fowler Homes Pty Ltd. Builders License Number: 113647C. Prices are effective as at 8th April 2010.