



HOUSE & LAND PACKAGE

SEVILLE 27

Affinity Facade

LOT 45, Middleton Grange



**For illustration purpose only*

HOUSE	\$236,445 PRICE BASED ON AFFINITY FACADE
FACADE (AFFINITY)	\$6,930
COMPLETE PACKAGE	\$23,000
BASIX PRICE	\$7,000
LAND 484.3 sqm	\$325,000
TOTAL	\$598,375

THE ABOVE PRICE INCLUDES

- Standard Site Costs / Council & Workcover Conditions / BASIX
- Complete Package - Tiles, Carpet & Driveway to boundary
- House Price based on Designer Inclusions
- See quotation for full details



Contact
Ian Cox - 0416 277 613

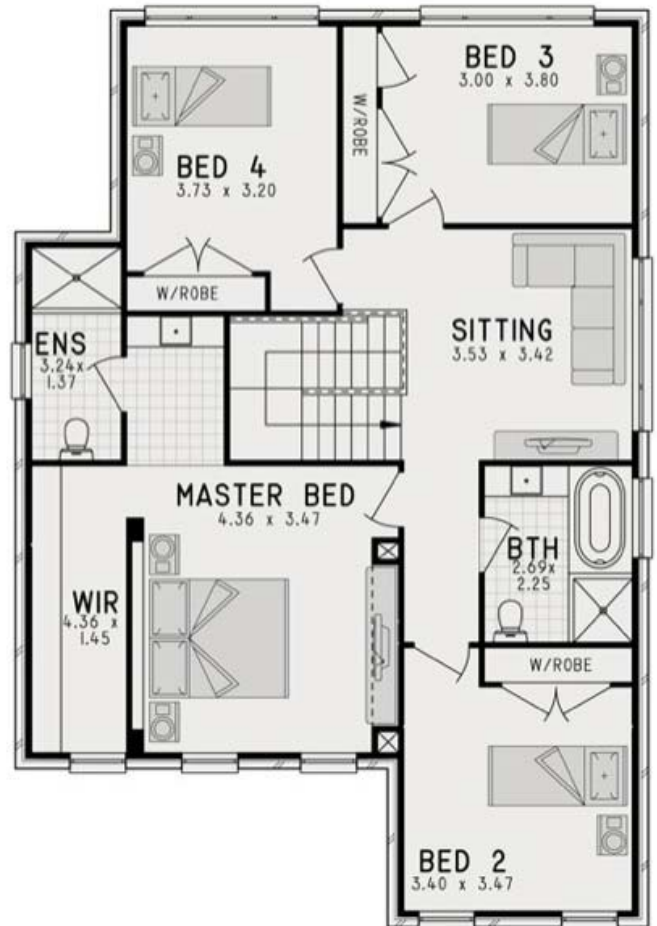
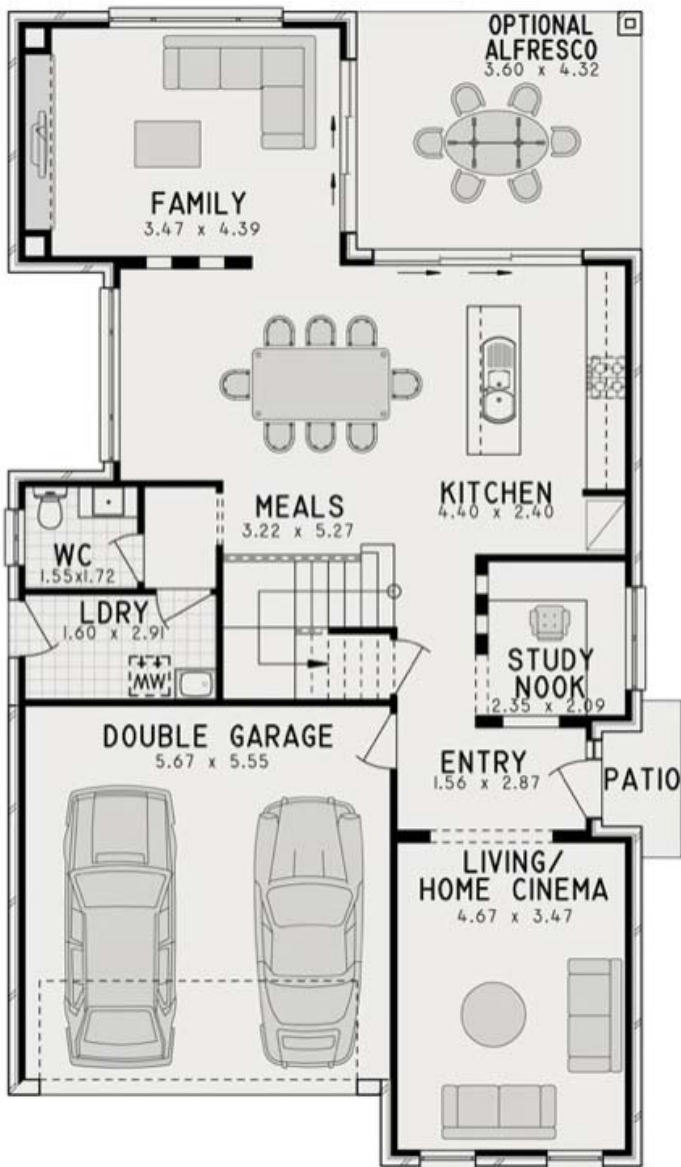


total area - 258.38 sqm

overall width - 9.59 m

length - 17.51 m

alfresco - 15.55 sqm



sales consultant	Helena O'Brien
phone	0433 013 959
email	Helena.oBrien@fowlerhomes.com.au